

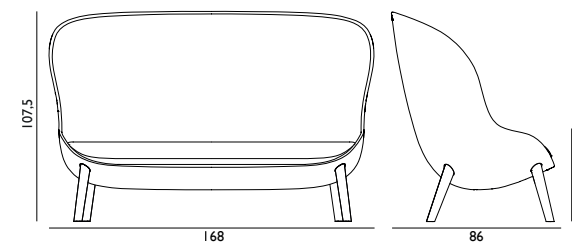
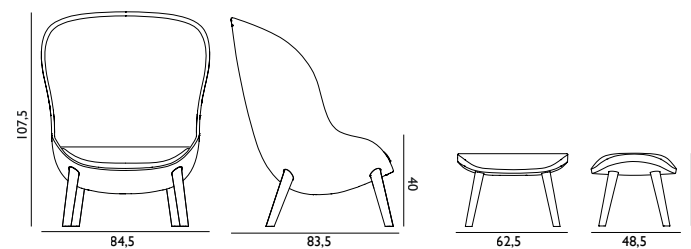
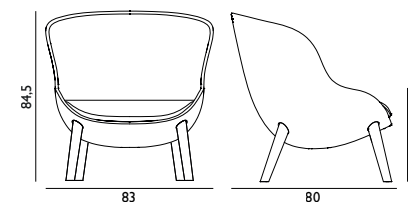
HYG



HYG - OAK

FURNITURE / LIGHTING / ACCESSORIES

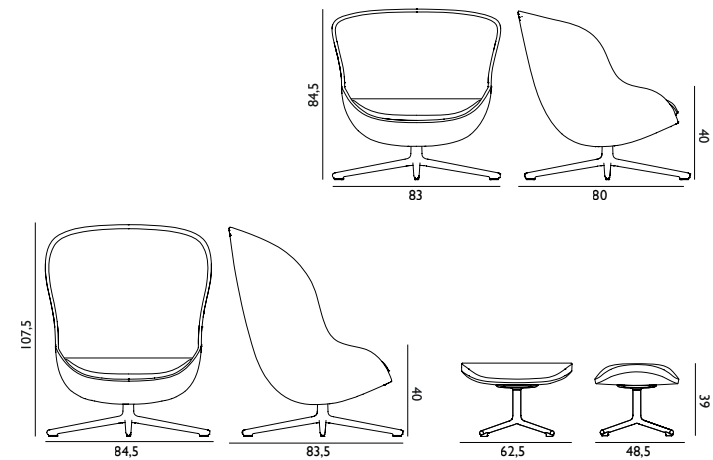
DESIGNER / YEAR OF DESIGN	Simon Legald, 2017
MATERIAL	Shell: PU foam, steel reinforcement Textile: Camira - Main Line Flax, Camira - Synergy Leather: Sørensen Leather - Ultra Leather, Sørensen Leather - Vegetal Leather Legs: Oak
COLOURS	All colors in available textiles.
CONSTRUCTION	The shell has a steel reinforcement for added strength. Hyg is made of molded PU foam with a molded lumbar support. Hyg is delivered assembled.
DIMENSIONS	Hyg Lounge Chair Low Oak / H: 84,5 x L: 83 x D: 80 x SH: 40 cm Hyg Lounge Chair High Oak / H: 107,5 x L: 84,5 x D: 83,5 x SH: 40 cm Hyg Footstool Oak / H: 39 x L: 62,5 x D: 48,5 cm Hyg Sofa Oak / H: 107,5 x L: 168 x D: 86 x SH: 40 cm
MAINTENANCE	Textile: Clean with textile or upholstery cleaner. Leather: Clean with damp cloth. Use warm water with soap flakes. Frequent vacuuming with a soft fitting is recommended for both textile and leather to preserve color and appearance.



HYG - SWIVEL

FURNITURE / LIGHTING / ACCESSORIES

DESIGNER / YEAR OF DESIGN	Simon Legald, 2017
MATERIAL	Shell: PU foam, steel reinforcement Textile: Camira - Main Line Flax, Camira - Synergy Leather: Sørensen Leather - Ultra Leather, Sørensen Leather - Vegetal Leather Legs: Alu or Black Alu
COLOURS	All colors in available textiles.
CONSTRUCTION	The shell has a steel reinforcement for added strength. Hyg is made of molded PU foam with a molded lumbar support. Hyg is delivered assembled. Hyg Swivel is available with tilt-function.
DIMENSIONS	Hyg Lounge Chair Low Swivel / H: 84,5 x L: 83 x D: 80 x SH: 40 cm Hyg Lounge Chair High Swivel / H: 107,5 x L: 84,5 x D: 83,5 x SH: 40 cm Hyg Footstool Swivel / H: 39 x L: 62,5 x D: 48,5 cm
MAINTENANCE	Textile: Clean with textile or upholstery cleaner. Leather: Clean with damp cloth. Use warm water with soap flakes. Frequent vacuuming with a soft fitting is recommended for both textile and leather to preserve color and appearance.

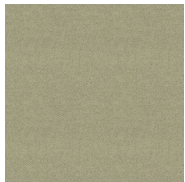


TEXTILES



CAMIRA - MAIN LINE FLAX

Material: 70% Virgin Wool, 30% Flax
Abrasion Resistance: \geq 50,000
Color Fastness to light: (Scale 1-8, max 8) 5
Environment: EU Ecolabel



CAMIRA - SYNERGY

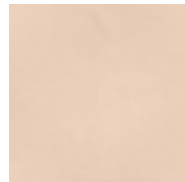
Material: 95% Virgin Wool, 5% Polyamide
Abrasion Resistance: \geq 100,000
Color Fastness to light: (Scale 1-8, max 8) 5
Environment: EU Ecolabel

LEATHER



SØRENSEN LEATHER - ULTRA LEATHER

Material: Protected leather
Thickness: 0.9 – 1.1 mm
Surface: Very strong and durable with a uniform, matt surface print
Finish: Extremely strong surface protection



SØRENSEN LEATHER - VEGETAL LEATHER

Material: Aniline leather
Thickness: 1.2 – 1.4 mm
Surface: Natural surface with subtle markings
Finish: None

LEGS



OAK



ALU



BLACK ALU